

# DWR VIZAG CYCLONE BULLETIN

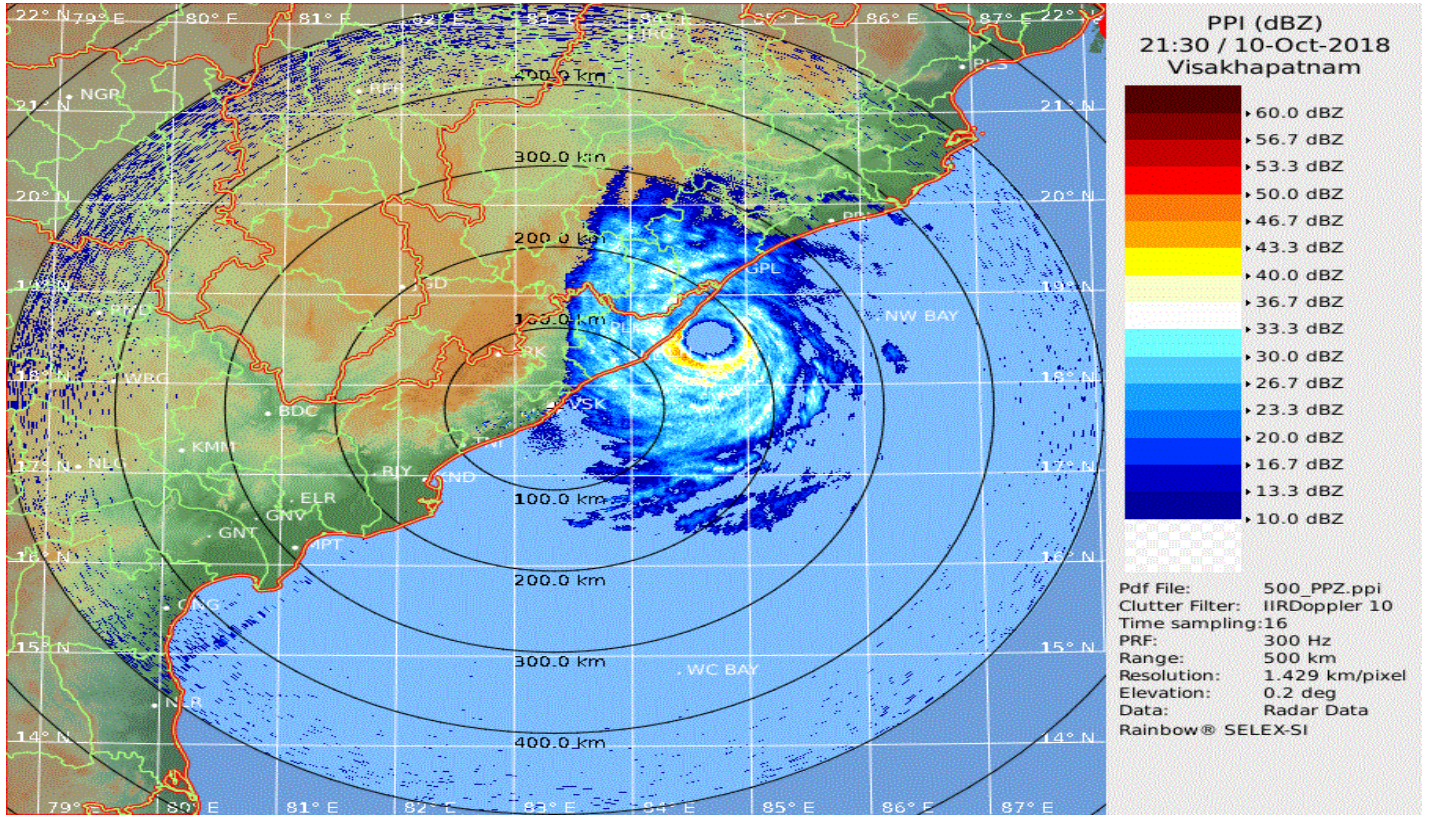
CYCLONE BULLETIN NO: 21

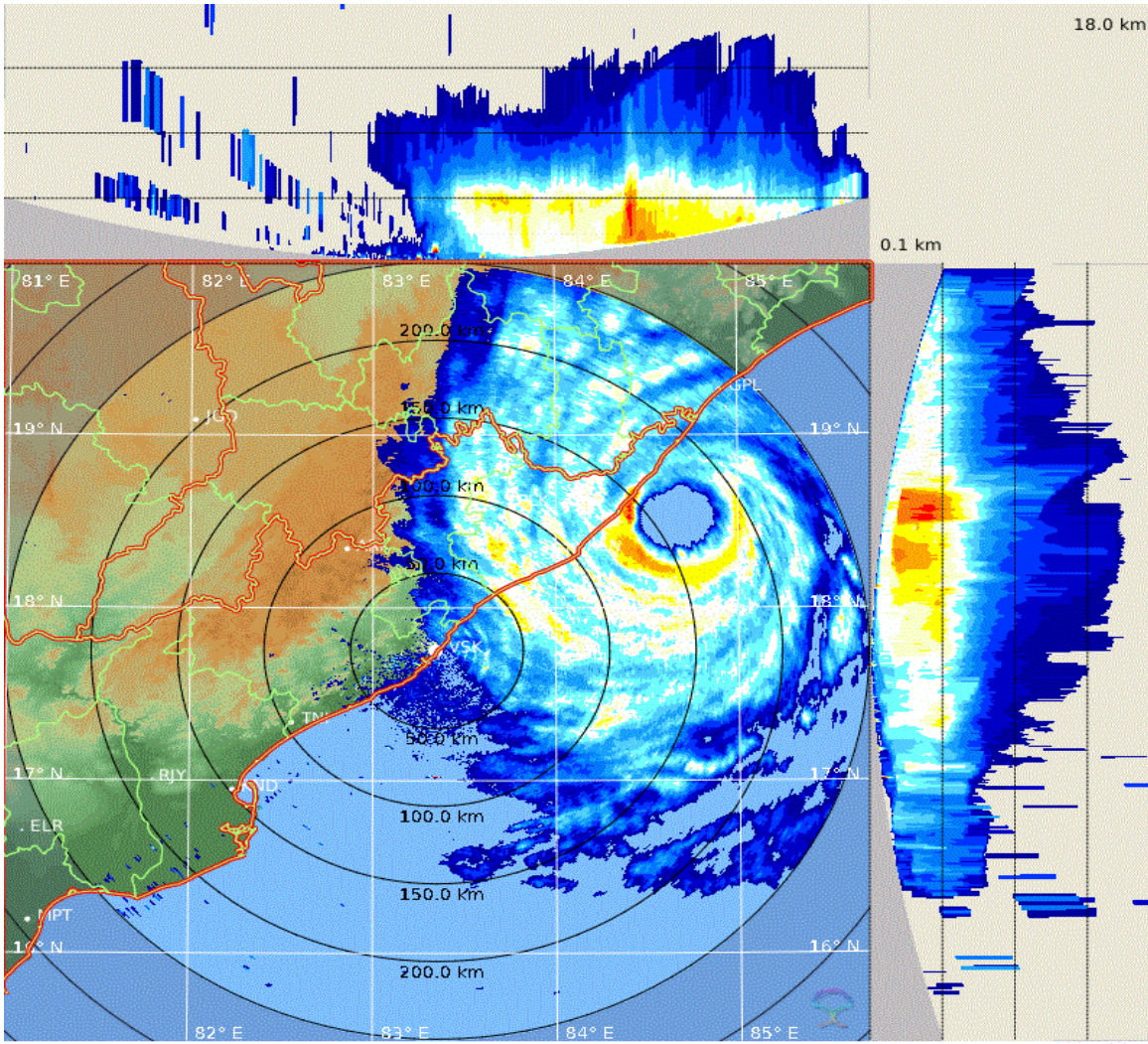
CYCLONE TITLI

TIME: 11/10/2018 0330IST

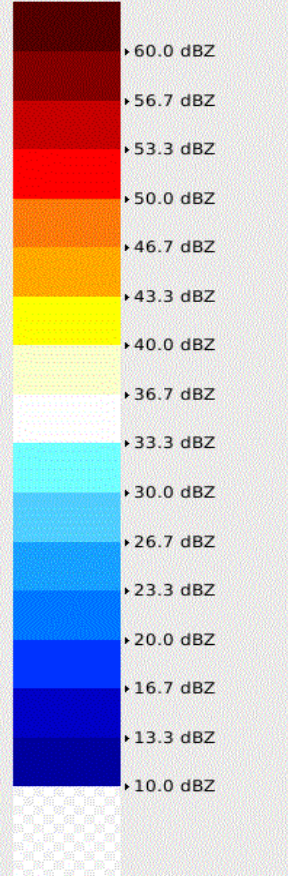
1.	<b>Name of the station</b>	<b>DWR VSK</b>
2.	<b>Date and Time of Observation (UTC)</b>	<b>21:30UTC 10/10/2018</b>
3.	<b>Name of the Cyclone</b>	<b>TITLI</b>
4.	<b>Information about the eye of the Cyclone</b>	
	a. <b>Is the Eye Visible</b>	<b>VISIBLE</b>
	b. <b>Shape of the Eye</b>	<b>CIRCLE</b>
	c. <b>Diameter of the Eye(km)</b>	<b>40 KMS</b>
	d. <b>Estimation of centre of the cyclone based on Eye/spiral band observation</b>	<b>18.53N 84.65E Azi 59/ Dist 163.7KMS(From Radar VSK)</b>
	e. <b>Echo top (height 20 dBZ level) of rain bearing clouds around the cyclone within 100 Km radius (km)</b>	<b>11 Km</b>
	f. <b>Maximum radar reflectivity (dBZ) &amp; rainfall rate (mm/h) in the eye wall/spiral band region, its height (km) and position (azimuth and distance from the radar)</b>	<b>52 DBZ/4 kms(height)/146kms from Radar</b>
	g. <b>Maximum reflectivity at any other area (spiral/ streamers etc)</b>	<b>-</b>
	h. <b>Maximum radial velocity in eye wall/spiral band region (mps), its height (km) and its position (azimuth and distance from the Radar)</b>	<b>187kmph/ 101 knts/ 52m/s 155kms from Radar/ Height of 2.0kms</b>
	i. <b>Maximum velocity in any other area (spiral / streamers / rain shields etc)</b>	<b>-</b>
5.	<b>Tendency of the Cyclone</b>	
	a. <b>Intensity(Increasing/Decreasing)</b>	<b>Same</b>
	b. <b>Duration for which the information on movement pertains to</b>	<b>Past 30 minutes</b>
	c. <b>Direction of Movement</b>	<b>Northwestward</b>
	d. <b>Estimated speed of Movement</b>	<b>16 kmph</b>
6.	<b>Any other Significant Feature</b>	<b>Eye-wall crossing over North Andhra coast 100 kms S-SW of Gopalpur</b>
7.	<b>Confidence</b>	<b>Fair</b>

**OFFICER IN CHARGE  
DWR VISAKHAPATNAM**

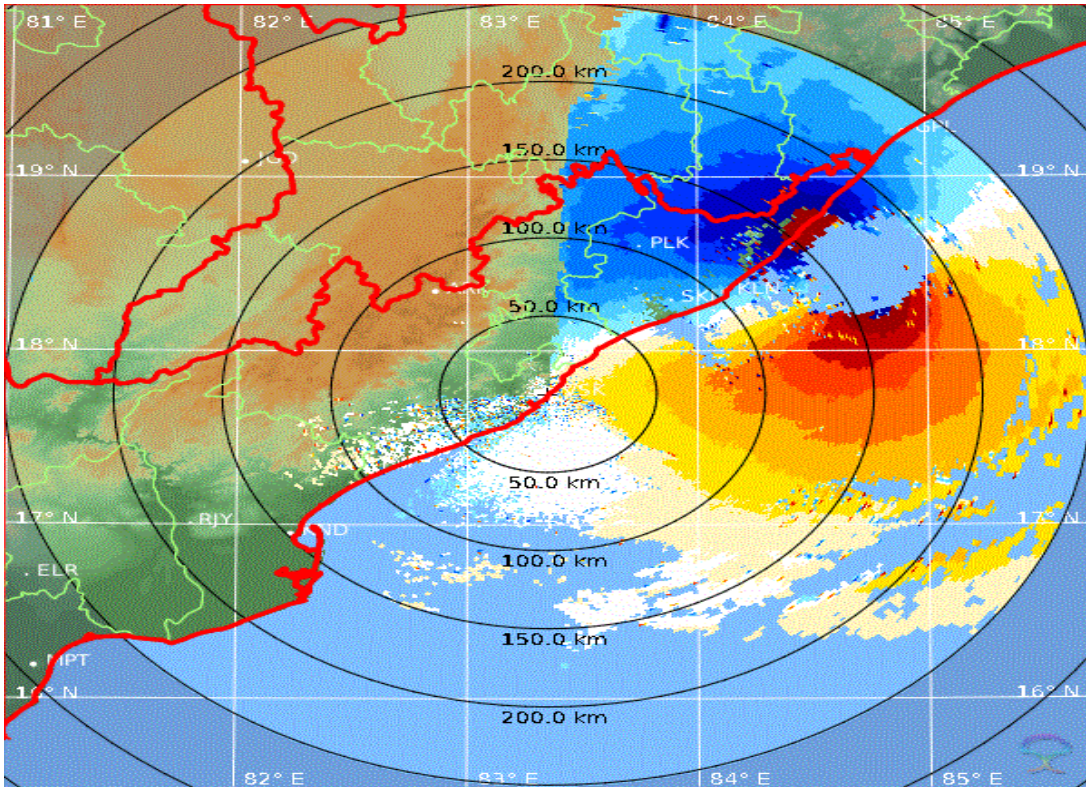




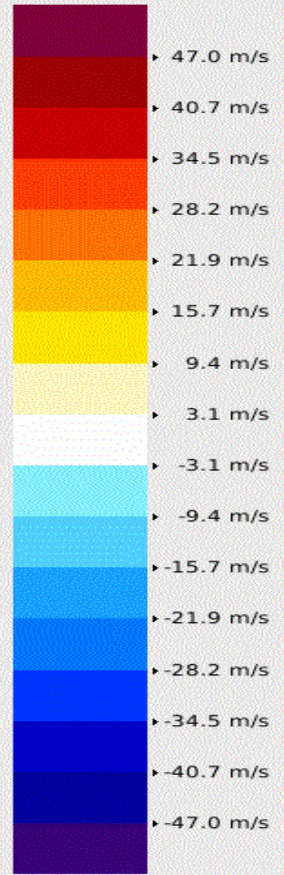
MAX (dBZ)  
21:31 / 10-Oct-2018  
Visakhapatnam



Pdf File: 250\_Z.max  
 Clutter Filter: IIRDoppler 8  
 Time sampling: 50  
 PRF: 600 Hz / 450 Hz  
 Range: 250 km  
 Height: 0.100 km to 18.000 km  
 Hor Res: 0.833 km/pixel  
 Vert Res: 0.089 km/pixel  
 Data: Radar Data  
 Rainbow® SELEX-SI



PPI (V)  
21:31 / 10-Oct-2018  
Visakhapatnam



Pdf File: 250\_PPV.ppi  
 Clutter Filter: IIRDoppler 8  
 Time sampling: 50  
 PRF: 600 Hz / 450 Hz  
 Range: 250 km  
 Resolution: 0.833 km/pixel  
 Elevation: 0.2 deg  
 Data: Radar Data  
 Rainbow® SELEX-SI